

An estimated 6,700 people experience homelessness in San Francisco on any given night. Over 3,500 of those people are unsheltered and living in encampments or on the streets. Yet, San Francisco has only 1,500 shelter beds.

With a target of opening six Navigation Centers, the City is expanding the number of beds available and diversifying the neighborhoods being served.

- 1** Mission District Navigation Center
1950 Mission Street - March 2015
- 2** Civic Center Navigation Center
20 12th Street - June 2016
- 3** Central Waterfront Navigation Center
600 25th Street (target opening early 2017)

- 4** The City and County of San Francisco is committed to opening the fourth Navigation Center in the South of Market neighborhood.

The SoMa Navigation Center will serve over 1,000 homeless adults each year and will be a critical part of San Francisco's effort to resolve tent encampments.

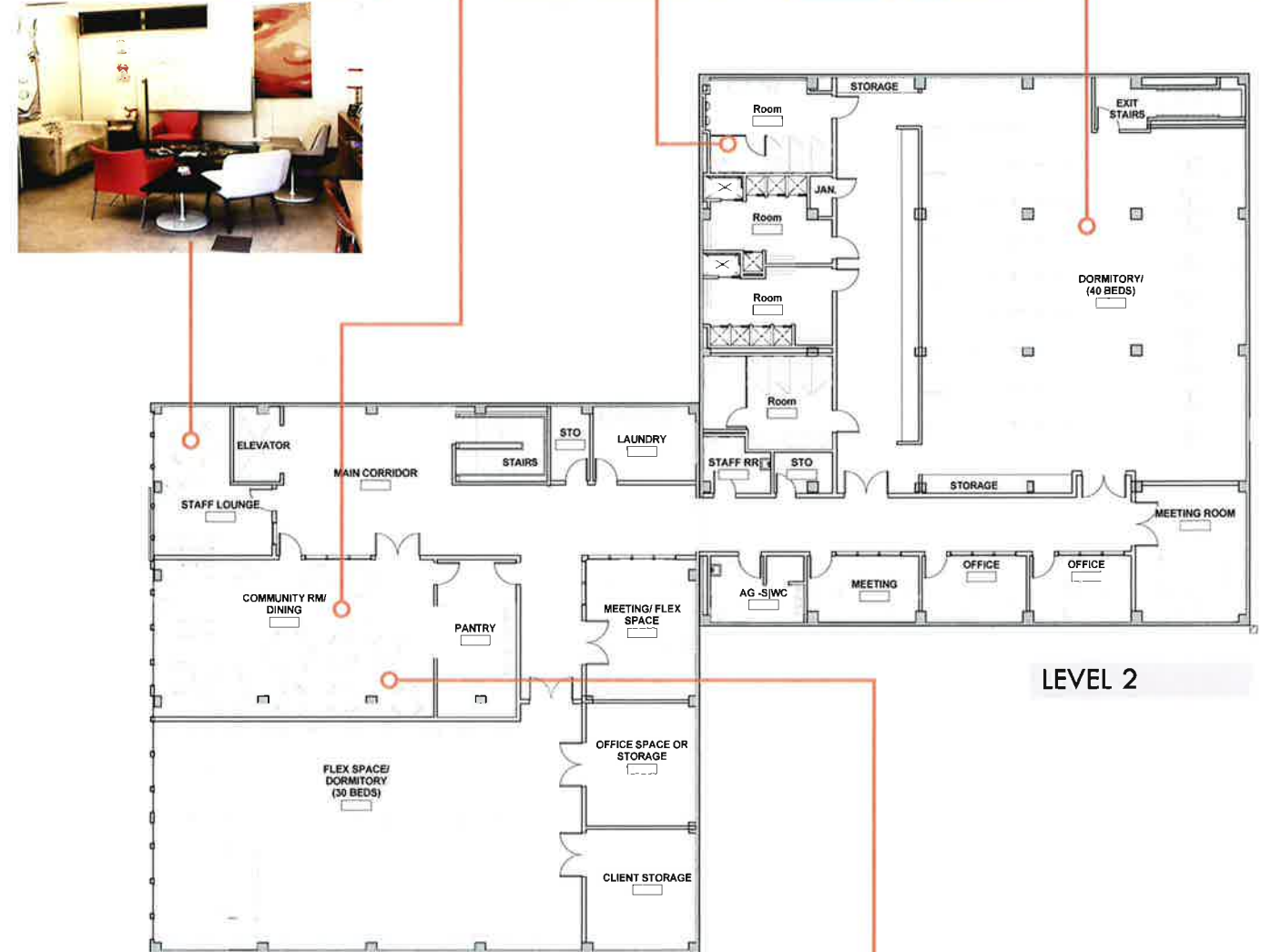
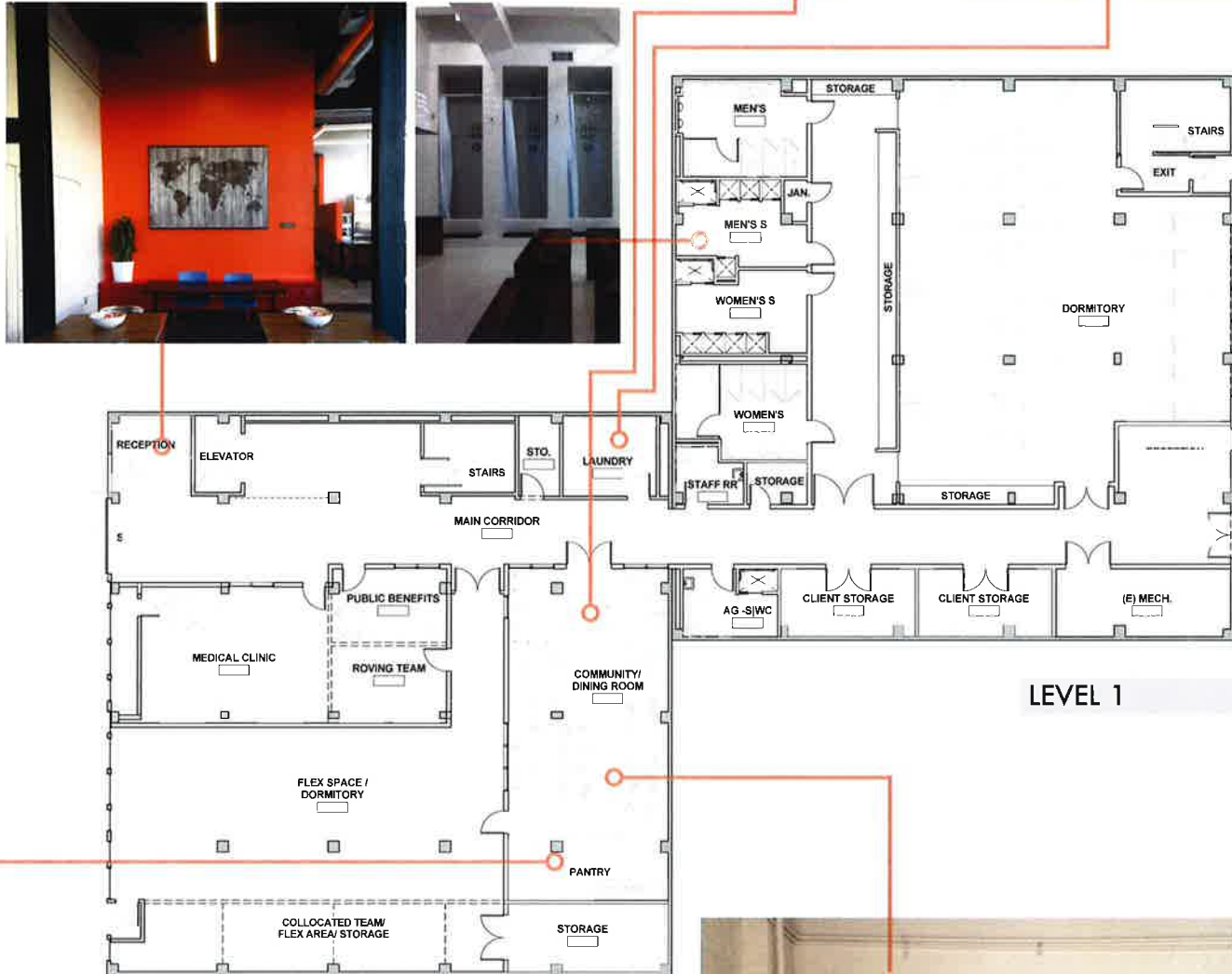
SOMA NAVIGATION CENTER

REST + HEAL + CONNECT + TRANSFORM



HSH





Navigation Centers are model programs designed to shelter San Francisco's highly vulnerable, homeless residents. A critical alternative to the dangerous conditions of encampments, Navigation Centers are places of safety and transformation.

Through welcoming, non-judgmental hospitality and intensive support, Navigation Centers engage homeless individuals who have had difficulty accessing traditional services and link them directly to shelter, supportive housing, public benefits, healthcare, and other stabilization services.



The City and County of San Francisco would like to locate the SoMa Navigation Center at 520 Jessie Street in a 22,000 square foot, two-story building, owned by the Salvation Army. The facility would undergo a \$5.8M renovation to offer approximately 100-125 shelter beds with showers, bathrooms, client storage, dining areas, community rooms, laundry, and offices on each floor. The Salvation Army would provide the facility rent free and the City would fund the estimated annual \$2.4M operating budget.

