

TRINITY PLACE

A luxurious, mixed-use development consisting of contemporary apartments, a pristine landscaped piazza, inspiring art and specialty retail



Kazuko Morgan

Vice Chairman
Lic. 01070005
(415) 773-3546
kazuko.morgan@cushwake.com

Kelly Vinson

Director
Lic. 01458148
(415) 658-3652
kelly.vinson@cushwake.com

Mary Kate Banchemo

Associate Director
Lic. 01830173
(415) 658-3641
marykate.banchemo@cushwake.com





1075 Market Street, Retail 1 & Retail 2

San Francisco, CA 94103 · 8,539 SF Total ·
Retail Properties

\$6,498,000



1075 Market Street, Retail 1 & Retail 2 - Portfolio For Sale

Price	\$6,498,000	Number of Properties	2
Price / SF	\$760.98 / SF	Individually For Sale	0
Sale Type	Investment or Owner User	Total Building Size	8,539 SF
Status	Active		
Listing ID: 11658009		Date Created: 02/20/2018	Last Updated:

Map of **1075 Market St San Francisco, CA 94103**



WELCOME TO ONE JONES, SAN FRANCISCO.

One Jones is the premier address in San Francisco's vibrant Mid-Market neighborhood, the epicenter of an emerging scene of restaurants & bars, hotels & residences and new upcoming developments. With several unique commercial leasing opportunities currently available, One Jones is ready for the next wave of movers, shakers and history-makers.

FEATURES

- Up to 41,717 SF Available for Immediate Lease
- Four unique floors offering single or multi-tenant leasing opportunities for Office, Retail or Entertainment use
- Located in the Hibernia Bank Building, a nationally recognized landmark and one of San Francisco's most celebrated architectural gems
- Unique amenity offerings, to include café & event space, club lounge, and urban courtyard
- Central access to public transportation options



CUSHMAN &
WAKEFIELD

COMMERCIAL CONDO FOR SALE

8 MINT PLAZA

SOMA / MID - MARKET OASIS

HIGHLIGHTS

- 2,951 sq. ft. on ground, with 1,938 sq. ft. basement
- Steel and glass staircase leads to mezzanine of 932 sq. ft.
- Beautiful outdoor dining patio with built-in heat lamps
- Dramatic floor-to-ceiling curved wall.
- Open to all tenant types. Active outdoor use preferable.

Sarah Brett
+1 415 773 3559
sarah.brett@cushwake.com
Lic. #01903152

Pam Mendelsohn
+1 415 773 3557
pam.mendelsohn@cushwake.com
Lic. #00953050

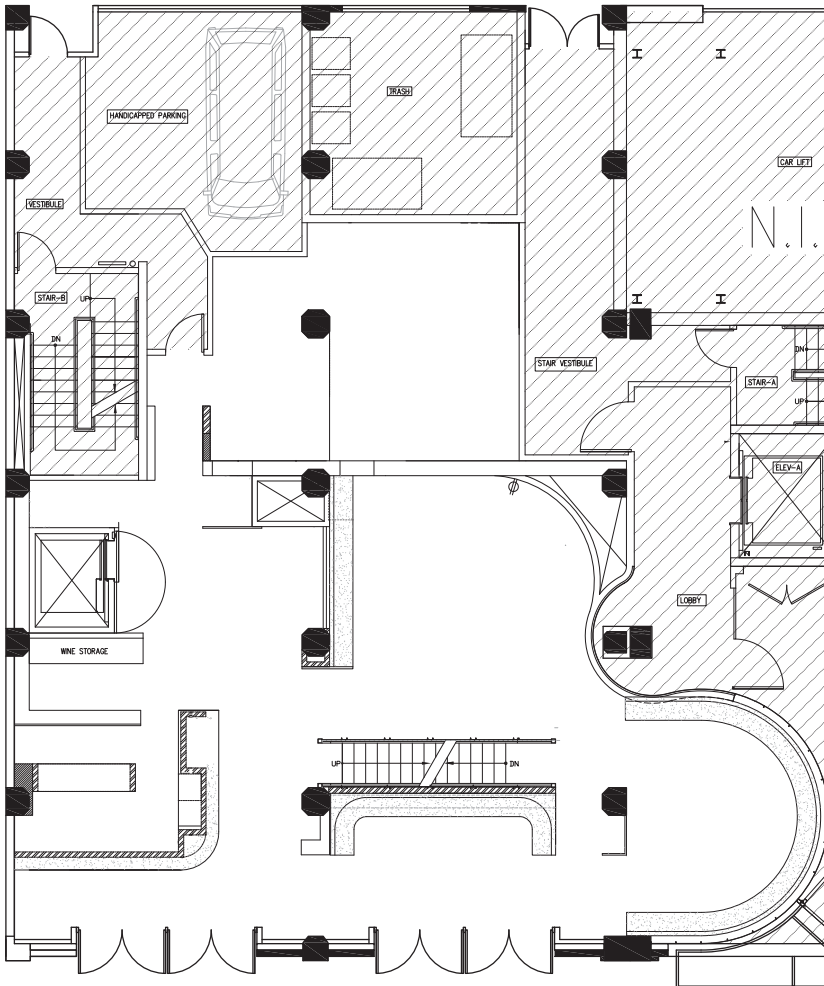
COMMERCIAL CONDO FOR SALE

8 MINT PLAZA

SOMA / MID - MARKET OASIS

/ FACTS AND STATISTICS

- 2,911 luxury hotel rooms and approximately 4,000 high-end residential units in the immediate area.
- Steps away from the Financial District with a daily population of 350,000
- Near the Academy of Art University, home to 15,000 students enrolled in academic buildings city-wide.
- Very easily accessible by Muni bus lines, historic "F" trolley line, and Montgomery Street BART station
- 16.3 million visitors city-wide annually, generating \$7.3 billion in revenue.
- Nearby Union Square is the 3rd most popular attraction in the city; 65% of all tourists visit Union Square.
- Moscone Convention Center hosts an average of 100 events a year drawing over a million attendees.
- Westfield San Francisco Centre comprises over 1.5 Million square feet, draws over 20 million visitors per year, and generates sales of \$857 psf.



Sarah Brett

+1 415 773 3559

sarah.brett@cushwake.com

Lic. #01903152

Pam Mendelsohn

+1 415 773 3557

pam.mendelsohn@cushwake.com

Lic. #00953050



944

MARKET
STREET

FOR MORE INFORMATION, PLEASE CONTACT

LAURA SAGUES

Lic. 01888298

+1 415 772 0122

laura.sagues@cbre.com

CBRE, Inc. | 101 California Street, 44th Fl. | San Francisco, CA 94111 | www.cbre.com/sfdt

© 2017 CBRE, Inc. The information contained in this document has been obtained from sources believed reliable. While CBRE, Inc. does not doubt its accuracy, CBRE, Inc. has not verified it and makes no guarantee, warranty or representation about it. It is your responsibility to independently confirm its accuracy and completeness. Any projections, opinions, assumptions or estimates used are for example only and do not represent the current or future performance of the property. The value of this transaction to you depends on tax and other factors which should be evaluated by your tax, financial and legal advisors. You and your advisors should conduct a careful, independent investigation of the property to determine to your satisfaction the suitability of the property for your needs. Photos herein are the property of their respective owners and use of these images without the express written consent of the owner is prohibited. CBRE and the CBRE logo are service marks of CBRE, Inc. and/or its affiliated or related companies in the United States and other countries. All other marks displayed on this document are the property of their respective owners.

CBRE

944

MARKET
STREET



DETAILS

- 4,173 SF Ground Floor (+948 SF Mezzanine) - possibility for additional 1,474 SF on the GF
- Tremendous storefront: Visibility from Market, Turk and Mason
- 53' of frontage on Market and 112' on Mason boasting 18' ceilings
- In the heart of a major tech and a number of significant new developments
- Sitting on a dense network of transit for easy accessibility
- Overlooking the new 250,000 SF 6x6 retail development
- Steps off the intersection of Powell & Market with pedestrian counts over 70,000 daily
- Across the street from one of the top performing Westfield Malls in the US
- Immediately off the Powell Street BART line and Powell Street Cable car lines

BOLD, BRIGHT 1035 RETAIL MODERN MARKET LEASE

MID MARKET | SAN FRANCISCO



ERIKA ELLIOTT

lic. 01234477

+1 415 293 6295

erika.elliott@colliers.com

Colliers
INTERNATIONAL

OWNER USER OR INVESTMENT PROPERTY

30 Mason Street | San Francisco, CA



Property Features

- Prime Downtown Location
- Unit will be delivered vacant
- Ideal For Owner/User Purchaser
- Excellent Frontage on Mason St
- Across The Street From Westfield Mall
- Steps From Powell St. BART
- Top Walk Score & Traffic Count
- \$1.7 Billion spent within a one mile radius (2015 Consumer Spending Report)
- New 250,000 SF 'Market Street Place' being constructed between 5th & 6th on Market. 250 Residential Units & 230 Hotel Rooms Planned next door at Market & Turk St.

For more information:



Mary Alam, MBA

O: (415) 358-2111 • malam@nainorcal.com
CA BRE #01927340



Todd Lewis

O: (415) 299-8240 • tlewis@nainorcal.com
CA BRE #01970761

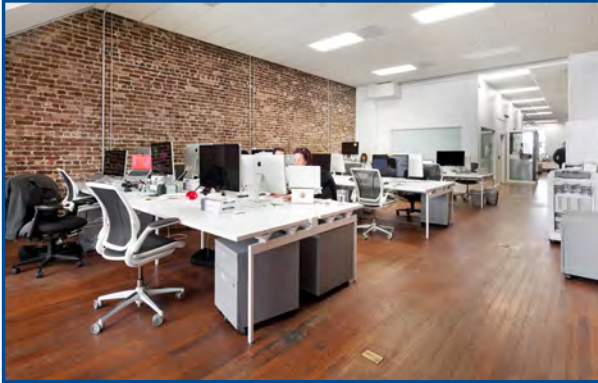


NO WARRANTY OR REPRESENTATION, EXPRESS OR IMPLIED, IS MADE AS TO THE ACCURACY OF THE INFORMATION CONTAINED HEREIN, AND THE SAME IS SUBMITTED SUBJECT TO ERRORS, OMISSIONS, CHANGE OF PRICE, RENTAL OR OTHER CONDITIONS, PRIOR SALE, LEASE OR FINANCING, OR WITHDRAWAL WITHOUT NOTICE, AND OF ANY SPECIAL LISTING CONDITIONS IMPOSED BY OUR PRINCIPALS NO WARRANTIES OR REPRESENTATIONS ARE MADE AS TO THE CONDITION OF THE PROPERTY OR ANY HAZARDS CONTAINED THEREIN ARE ANY TO BE IMPLIED.

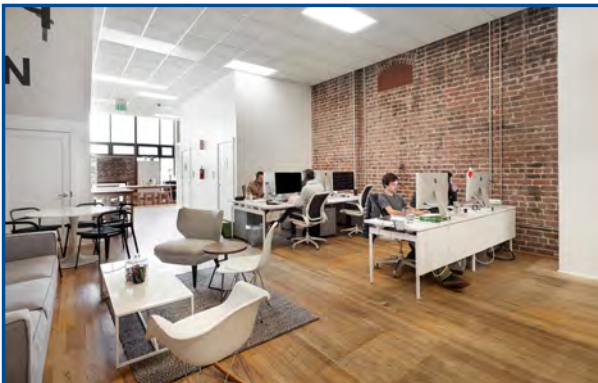
NAI Northern California
101 California Street
San Francisco, CA 94111
O: (415) 481-0984
www.nainorcal.com

Creative Office Space for Lease

1153 MISSION STREET SOMA Sub-Market



Mostly open brick & timber space



Mostly open brick & timber space



Upgraded Kitchette



Presented By:

Bradley L. Colton

(415) 834-1600

bcolton@coltoncommercialsf.com

License #: 00805116

Jay D. Shaffer

(415) 834-1600 ext. 203

jshaffer@coltoncommercialsf.com

License #: 01444640



565 Commercial Street, 4th Floor San Francisco, CA 94111

P: 415.834.1600 • F: 415.834.1601 • www.coltoncommercialsf.com

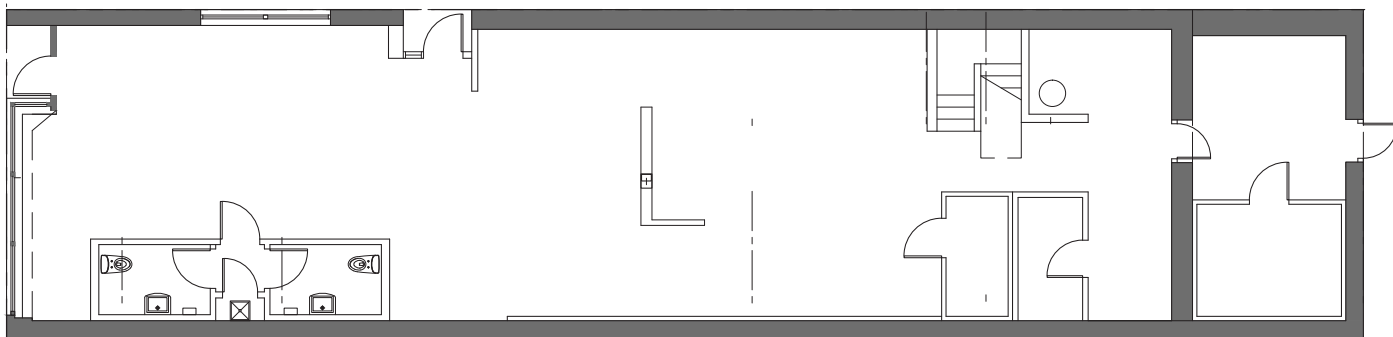


1114 MARKET

Mid-Market - Retail for Lease

Cushman & Wakefield Copyright 2016. No warranty or representation, express or implied, is made to the accuracy or completeness of the information contained herein, and same is submitted subject to errors, omissions, change of price, rental or other conditions, withdrawal without notice, and to any special listing conditions imposed by the property owner(s). As applicable, we make no representation as to the condition of the property (or properties) in question.

MARKET STREET



PAMELA MENDELSON

LIC. #00953050
+1 415 773 3557
pam.mendelson@cushwake.com

SARAH BRETT

LIC. #01903152
+1 415 288 7812
sarah.brett@colliers.com

- 2,500 square feet on ground floor
- Adjacent to boutique SF Proper Hotel
- Equipped with restaurant infrastructure
- Perfect for cutting-edge food tenant
- Available now

PREMISES

THE KOR GROUP



1013 MISSION STREET

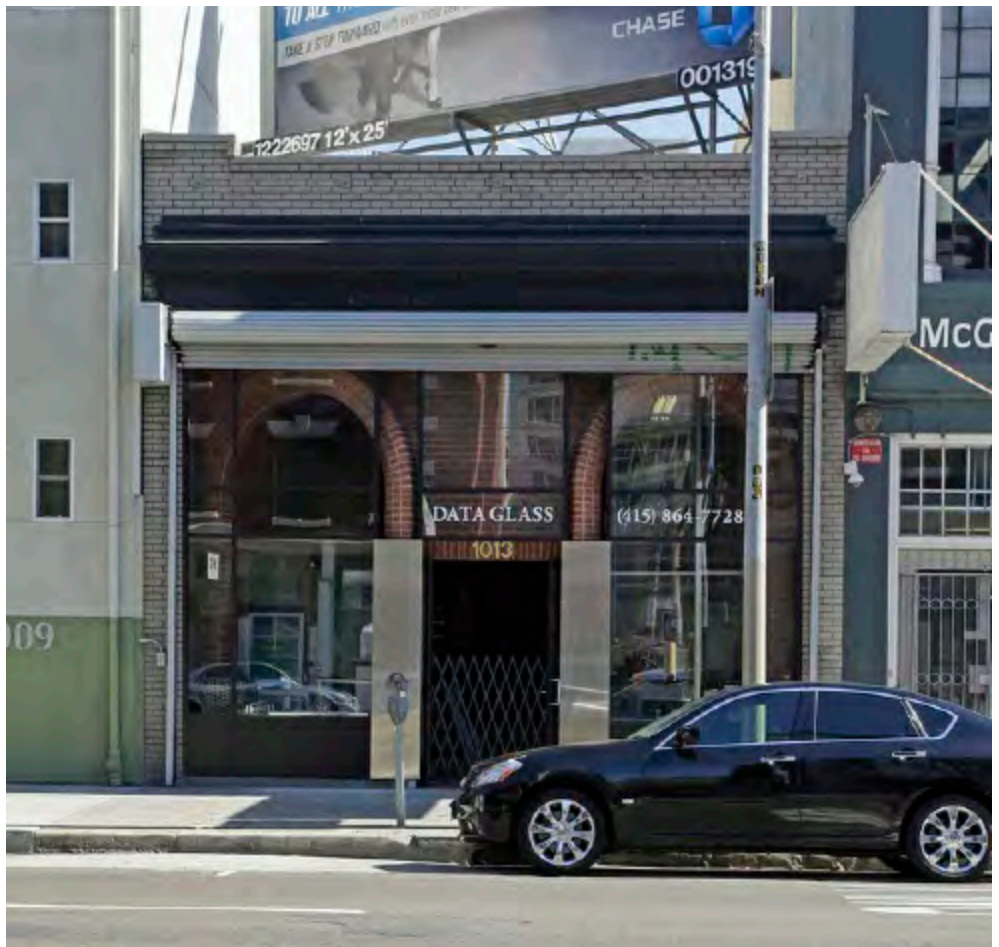
SOMA

CREATIVE FLEX
WAREHOUSE
RETAIL BUILDING

ZACH HAUPERT
(415) 539-1121
zhaupert@tcpre.com



MICHAEL SANBERG
(415) 539-1103
msanberg@tcpre.com



APPROXIMATELY 4,250 SQUARE FEET ON 2 FLOORS





FOR LEASE

1045 Mission
San Francisco, CA 94102



Square Footage: 1,273 SF

Vibrant SOMA Retail space on Vibrant Mission Street corridor. Floor-to-ceiling storefront windows, high ceilings, and excellent visibility.Â Landlord motivated and willing to contribute to Tenant build-out.Â Restaurants/cafes welcome, Landlord will contribute to hood installation.Â Attractive rent schedule, must-see opportunity.

+/- 1,273 SF Ground Floor Retail

- * Retail at SOMA Residences
- * 278 On-site Residential units
- * Excellent street frontage
- * Good signage opportunity
- * Storage space available
- * Centrally located in vibrant Mid-Market corridor
- * Strong daytime population
- * Across from Federal building and Court of Appeals
- * Over 3,000 residential units underway in neighborhood
- * Mid-Market tech corridor with Twitter, Spotify, Zendesk and more..

Haley Klein

Office: (925) 408-6415
hk@deroseappelbaum.com

Joan Ruyle

Office: 415.781.7700
Cell: 415.471.8504
joan@deroseappelbaum.com

Santino DeRose

Office: 415.781.7700
Cell: 415.336.0151
sd@deroseappelbaum.com

For Lease



1059 Market Street

San Francisco, CA

Ground Floor Flex/Retail Space Available

±5,624 rentable square feet

Glass store front with double door entry

Steel security gates

Open, clean space

Large roll-up door on Stevenson Street

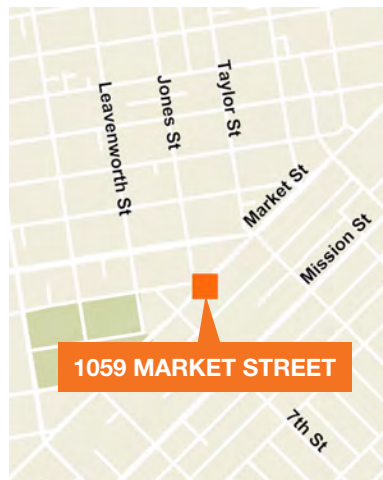
Available: Now

Rate: Inquire with broker

Term: Flexible



Location



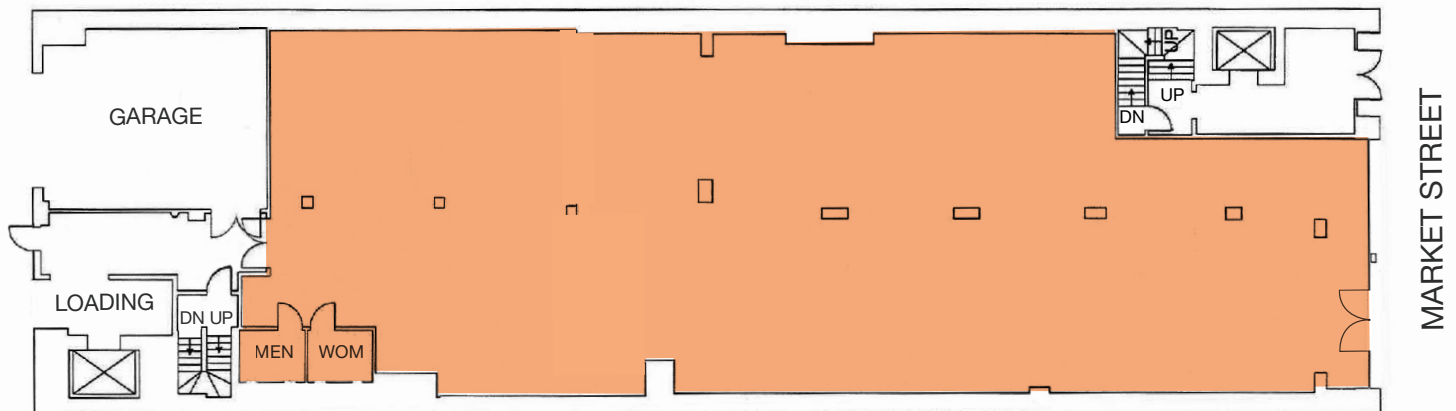
Contact

Evan Housel
415.948.3729
ehousel@kiddermathews.com
LIC #01882475

Mario Previtali
415.755.8905
mariop@kiddermathews.com
LIC #01902075

1059 Market Street

Ground Floor | ±5,624 SF



Contact

Evan Housel
415.948.3729
ehousel@kiddermathews.com
LIC #01882475

Mario Previtali
415.755.8905
mariop@kiddermathews.com
LIC #01902075



FOR LEASE | RETAIL

PRIME WESTERN SOMA RETAIL FOR LEASE

1401 Mission Street | San Francisco, CA 94103



PROPERTY SUMMARY

AVAILABLE SF:	1,113 SF
LEASE RATE:	\$48.00 SF/Yr (NNN)
LOT SIZE:	0.3 Acres
BUILDING SIZE:	138,512 SF
YEAR BUILT:	2015
ZONING:	C-3-G
MARKET:	San Francisco
SUB MARKET:	West SOMA
CROSS STREETS:	Mission Street & 10th Street

PROPERTY OVERVIEW

1,113 square feet of prime SoMa Mission Street retail space. 38 feet of Mission street frontage. New residential and retail project at the corner of Mission and 10th Street with 121 residential units and 1,113 square feet of retail space. Located in the heart of the emerging Western SoMa development renaissance. Within blocks of the Twitter and Uber Headquarters, the new Market on Market, San Francisco Opera, Ballet, and Symphony. C-3-G Zoning allows a wide range of use.

Walk Score 98

Transit Score 100

Bike Score 98

PROPERTY HIGHLIGHTS

- 1,113 square feet of Mission Street retail space
- 38 feet of Mission Street frontage with 15-foot ceilings
- Newly constructed 121 high-end residential apartment units on site
- Epicenter of the Western SoMa development renaissance
- Proximate to Twitter, Uber Headquarters, and Civic Center



KEVIN D. CHIN, CCIM

Managing Director
415.922.2900 X101
kevinc@svn.com
BRE #00696127

WEN TUNG

Senior Investment Advisor
415.922.2900 X103
wen.tung@svn.com
BRE #01325346

All SVN® Offices Independently Owned & Operated.
The information listed above has been obtained from sources we believe to be reliable, however, we accept no responsibility for its correctness.

svn.com



72-76 6th St

San Francisco, CA 94103 · 33,952 SF ·

Multiple Spaces For Lease

\$34.32 -
\$38.52 /SF/Yr



521 Jessie Street

Rental Rate	\$34.32 - \$38.52 /SF/Yr	Building Size	33,952 SF
Property Type	Hospitality	Year Built	1907
Property Sub-type	Single Room Occupancy Hotel		

Listing ID: 8789846

Date Created: 08/22/2017

Last Updated:

Description

521 Jessie Street offers an open lower level space with high ceilings. A private entrance from Jessie Street leads you down a dramatic stairwell into the space.

BUILDING ATTRIBUTES

- + High Ceilings
- + Dramatic Stairwell Entrance
- + Sprinklered
- + Natural Light

The space is between Market Street and Mission Street and 1 block from Mint Plaza. Many new high end residential developments are coming to the neighborhood over the next few years.

FOR LEASE > RETAIL



938 MARKET STREET

MID MARKET/UNION SQUARE | SAN FRANCISCO

- Less than one block from highly-trafficked Powell Street cable car turnaround and BART station
- Retail neighbors include Nordstrom Rack, Saks Off 5th, and Westfield San Francisco Centre
- Excellent opportunity for coffee, café, or grab-and-go food



ANN NATUNEWICZ

LIC. #01935970

415 288 7880

ann.natunewicz@colliers.com

NADINE WHISNANT

LIC. # 00966437

510 433 5858

nadine.whisnant@colliers.com

COLLIERS INTERNATIONAL
101 Second Street, 11th Floor
San Francisco, CA 94105
www.colliers.com

PACIFIC
UNION
University

FOR LEASE

Exclusive Agents

Andie Katter
415.834.3550
Lic #00884218

Morgan Thomas
415.834.3546
Lic #01527365

PACIFIC UNION
UNIVERSITY

International House of Pacific
Free Admission